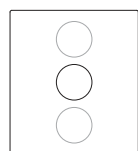
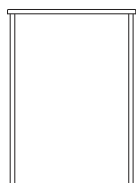


EASYPACK KITCHEN

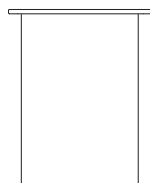
modulo per miscelatore 150 / mixer tap module 150



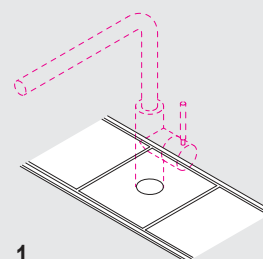
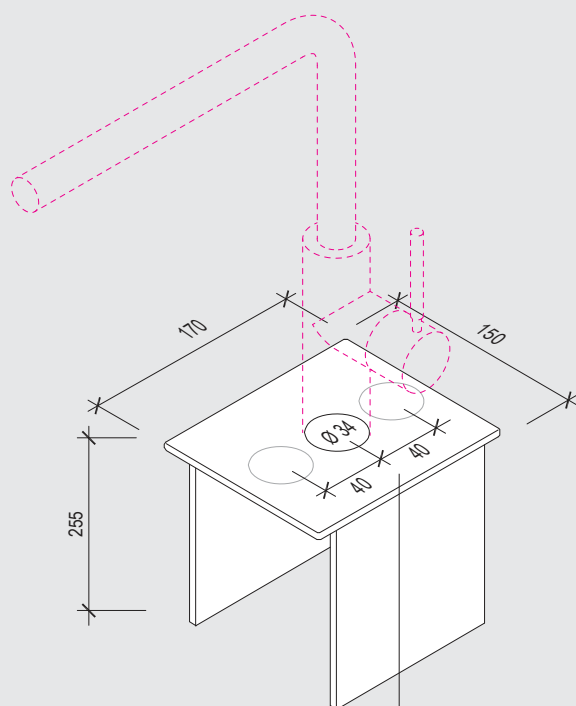
pianta / plan



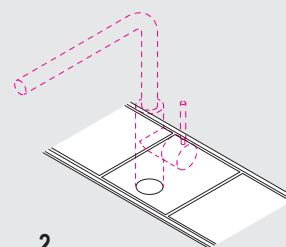
fronte / front



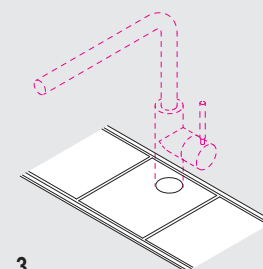
fianco / side



1



2



3

Verniciato bianco, nero o grigio inox
White, black or grey inox painted

Vengono fornite n.2 piastre;
una piastra con foro centrale e una piastra con foro decentrato.
Il miscelatore (escluso) può essere collocato a seconda delle necessità
in una delle tre posizioni (1, 2, 3) indicate nelle figure qui a fianco.
2 plates are supplied;
one plate with a central hole and one plate with an off-center hole.
The mixer (excluded) can be placed as needed
in one of the three positions (1, 2, 3) indicated in the figures above.